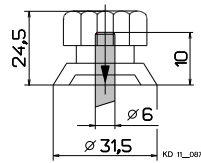
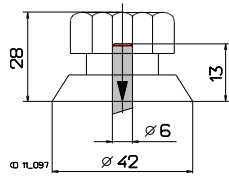
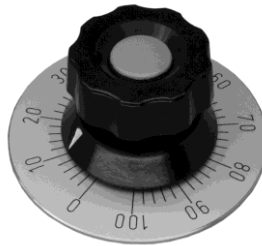


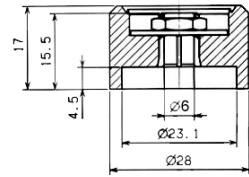
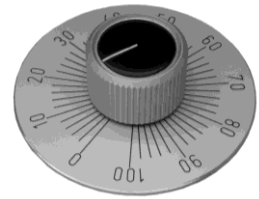
Drehknopf Ø 31,5
Duroplast
Spannzangenbefestigung



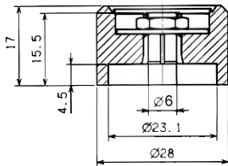
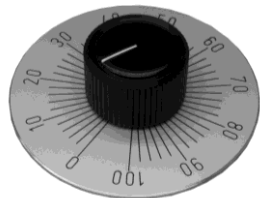
Drehknopf Ø 42
Duroplast
Spannzangenbefestigung



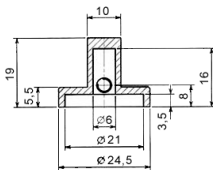
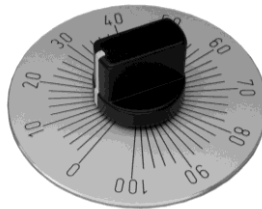
Alu Drehknopf Ø 28,0
alufarben eloxiert mit Kappe
Spannzangenbefestigung



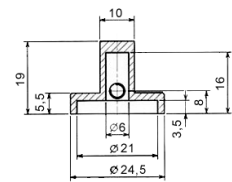
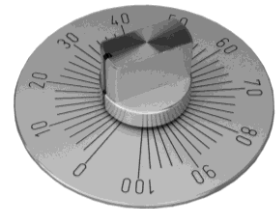
Alu Drehknopf Ø 28,0
schwarz eloxiert mit Kappe
Spannzangenbefestigung



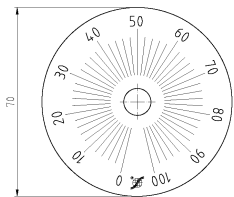
Alu Knebelknopf Ø 24,5
schwarz pulverbeschichtet
Gewindestiftbefestigung



Alu Knebelknopf Ø 24,5
schutzlackiert
Gewindestiftbefestigung

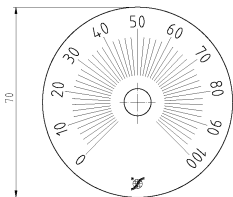


Skala 330° 0-100 Ø70
Grund silber, Schrift schwarz



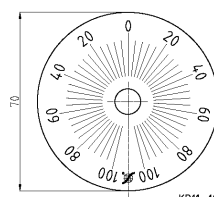
KD 11_918

Skala 270° 0-100 Ø70
Grund silber, Schrift schwarz



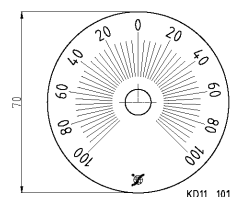
KD 11_918

Skala 2x165° 100-0-100 Ø70
Grund silber, Schrift schwarz



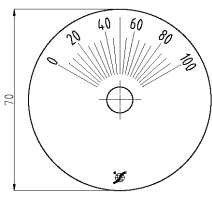
KD11_101

Skala 2x135° 100-0-100 Ø70
Grund silber, Schrift schwarz

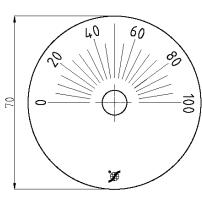


KD11_101

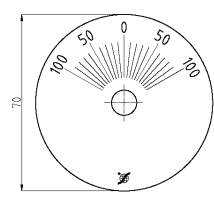
Skala 120° 0-100 Ø70
Grund silber, Schrift schwarz



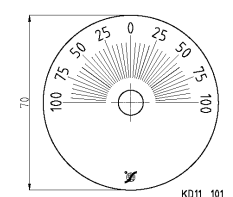
Skala 180° 0-100 Ø70
Grund silber, Schrift schwarz



Skala 2x60° 100-0-100 Ø70
Grund silber, Schrift schwarz



Skala 2x90° 100-0-100 Ø70
Grund silber, Schrift schwarz



KD11_101