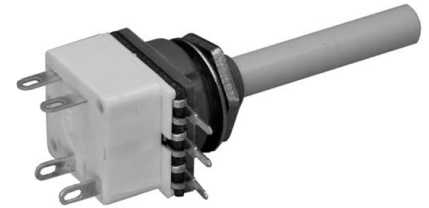


mechanical potentiometer - data

- 1.1 housing..... : GFK – Polyester
- 1.2 shaft..... : plastic ø6, L = max. 40
- 1.3 resistance element..... : conductive plastic
- 1.4 type of connection..... : print connection
- 1.5 mounted by..... : central fixing M10 x 0,75
- 1.6 mechanical rotation angle..... : 300°
- 1.7 electrical rotation angle..... : 270°
- 1.8 torque..... : < 4,0 Ncm
- 1.9 rotation load life..... : 15.000 cycles
- 1.10 end-stop strength..... : 80 Ncm
- 1.11 temperature range..... : -25° till +70°C



electrical potentiometer - data

- 2.1 resistance value..... : 4,7, 10, 47, 100K-Ohm
- 2.2 resistance tolerance..... : ± 20%
- 2.3 insulation resistance..... : 50 G-Ohm
- 2.4 test voltage..... : 3 KV

electrical switch - data

- 3.1 switch - data..... : 4 A/ 250 VAC
 or 10 A/ 12 VDA

