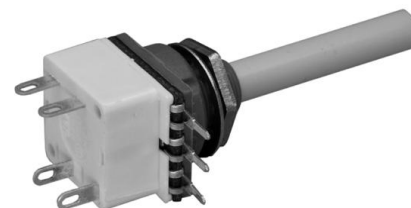


Mechanical potentiometer - data

- 1.1 Housing..... : GFK - Polyester
- 1.2 Shaft..... : Plastic ø6, L = max. 40 mm
- 1.3 Resistance element..... : Conductive plastic
- 1.4 Type of connection..... : Print connection
- 1.5 Mounted by..... : Central fixing M10x0,75
- 1.6 Mechanical rotation angle..... : 300°
- 1.7 Electrical rotation angle..... : 270°
- 1.8 Torque..... : max. 4,0 Ncm
- 1.9 Rotation load life..... : 15.000 cycles
- 1.10 End-stop strength..... : 80 Ncm
- 1.11 Temperature range..... : -25 °C ... +70 °C



Electrical potentiometer - data

- 2.1 Resistance value..... : 4,7, 10, 47, 100 K-Ohm
- 2.2 Resistance tolerance..... : ± 20%
- 2.3 Insulation resistance..... : 50 G-Ohm
- 2.4 Test voltage..... : 3 KV

Electrical switch - data

- 3.1 Switch - data..... : 4 A/ 250 VAC
 or 10 A/ 12 VDA

